



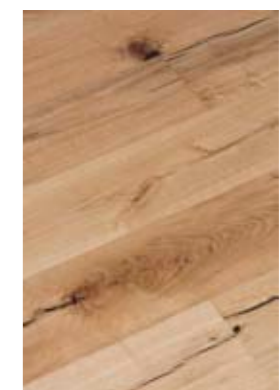
Bright. Light-coloured surfaces. Natural materials. The Scandinavian-style interior design uses simple shapes and subtle contrasts. For example, dark light fixtures offer a contrast to light wood.



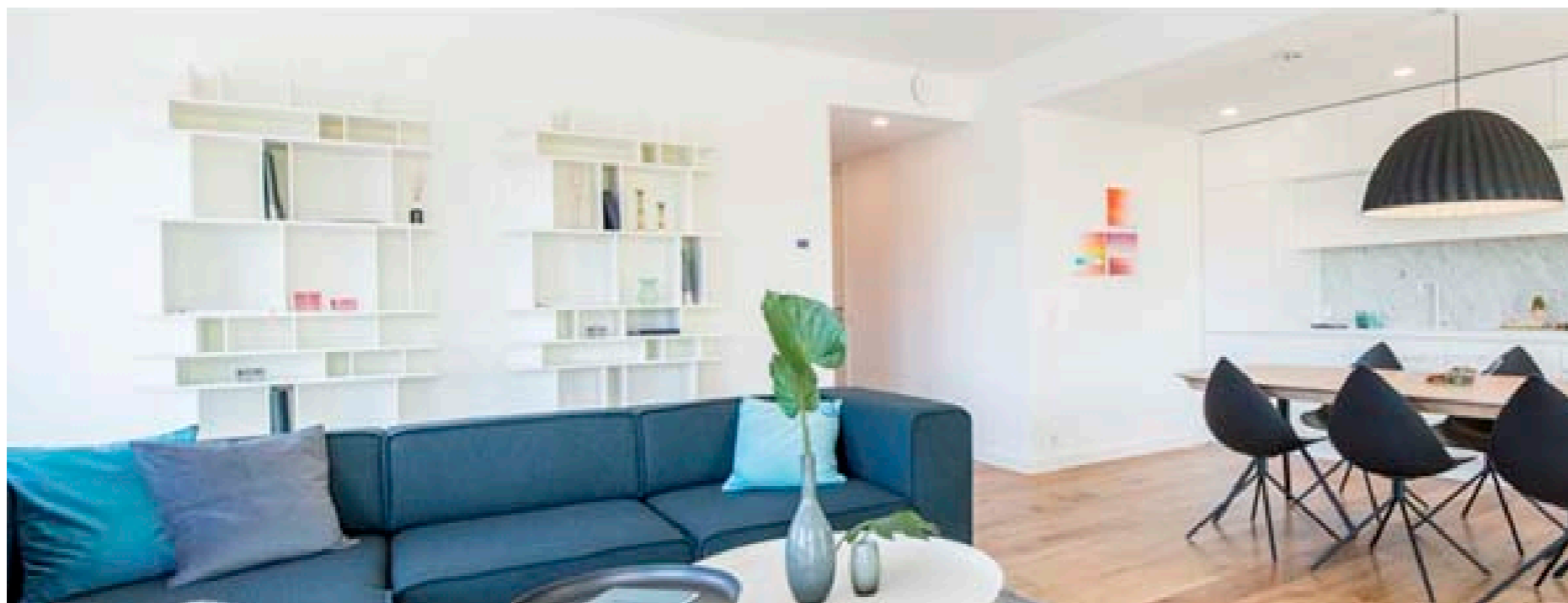
**Sockets**  
Berker Q white



**Interior door**  
Floor-to-ceiling door with white oak veneer



**Parquet**  
1-strip oak parquet  
Wicanders

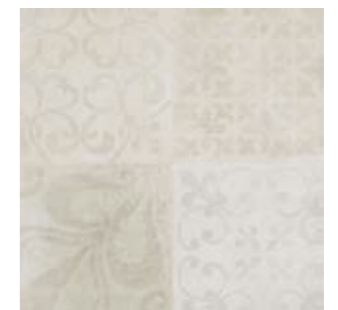




**Stone bathtub** Balteco Senzo



**Sanitary room and hall ceramic tiles**  
Priorat Beige



**Decorative tiles in sanitary room**  
Priorat Modul Beige



**Toilet basin**  
Villeroy & Boch Subway 2.0



**Bathroom faucet**  
Hansgrohe Talis S



**Thermostatic mixer for shower and bathtub**  
Hansgrohe Ecostat S



**Bathroom basin**  
Villeroy & Boch Subway 2.0



**Bathroom faucet**  
Hansgrohe Talis S



**Bath spout**  
Talis S



**Sauna door**  
Horizon



**Sauna heater**  
Huum Drop



**Shower drain**  
Geberit Cleanline



**Toilet bowl**  
Villeroy & Boch Subway 2.0



**Rainshower**  
Hansgrohe Crometta



**Hand shower**  
Hansgrohe Raindance Select